



# SERVICE **PORTFOLIO**





## ABOUT US

### MISSION

Our Mission is manage, design, build, and provide maintenance for electrical projects in the industrial, commercial, and telecommunications sectors. We offer a high quality service, process efficiency and high safety standards, we are committed to exceeding our clients' expectations and always ensuring their satisfaction. Furthermore, we work on strengthening the integral development of our human resources, building trust to our suppliers, generating growth and profitability to our shareholders, as well as contributing to the benefit of the community and the preservation of the environment.

### VISION

In the next five (5) years, IS2 we will consolidate our recognition as an engineering, consulting, design, and construction company for electrical and automation projects, both in Colombia and with a presence in the international market. This will be achieved through client satisfaction, innovation in our processes, based on the integral development of our employees, by identifying, evaluating and controlling risks within a culture of prevention and the appropriate use of resources, ensuring sustainability and economic growth for our shareholders, in balance with society and the environment.



## WHO WE ARE?

We are an engineering company with over 25 years of experience, headquartered in Colombia with a presence in the United States and Peru. Our team comprises highly specialized professionals in the design, construction, and management of infrastructure projects for the industrial, commercial, and telecommunications sectors. We take pride in working with our clients to achieve their objectives, providing efficient and effective solutions for every project we undertake.



**+25 YEARS  
OF EXPERIENCE**



**PRESENCE IN  
+3 COUNTRIES**



**+100 PROJECTS  
EXPERIENCE**

## WHAT DO WE DO?

In IS2 we are dedicated to the realization of electrical projects, including medium and low voltage, and photovoltaic power generation. Additionally, we focus on telecommunications projects, including 4G and 5G network development.

## PRESENCE IN SECTORS:

Our services span various sectors both nationally and internationally, including:



MINING SECTOR



PORTS SECTOR



SPECIAL ECONOMIC  
ZONES SECTOR



CEMENT SECTOR



FOOD AND BEVERAGE  
SECTOR



COMMERCIAL  
SECTOR



TELECOMMUNICATIONS  
SECTOR



OIL AND GAS  
SECTOR



TRANSPORT SECTOR



RENEWABLE  
ENERGY SECTOR





## CORPORATE VALUES



**INNOVATION:** The company is faced with unique challenges and opportunities for improvement in its various production processes. The ability to find creative and effective solutions defines innovation as an important value for the company.



**RESPONSIBILITY:** IS2 manages projects in sectors that can have a significant impact on society and the environment.



**COMMITMENT:** IS2 is engaged in working hand-in-hand with its clients to achieve their goals, demonstrating a dedication to their success.



**EXCELLENCE:** IS2 is committed to achieving the highest standards of quality and applying national and international standards.

## VALUE PROPOSITION

*Guarantee the execution of projects by providing:*



### RELIABILITY

Execution of projects in compliance with the required norms and standards for each industry.



### TRUST

Providing interactive, agile, reliable and timely reports.



### DELEGATION

Highly qualified professionals are assigned to each project.



### COMPLIANCE

Meeting agreed-upon delivery dates based on established timelines.



## OUR PRESENCE

### SECTORS



MINING SECTOR



PORTS SECTOR



SPECIAL ECONOMIC ZONES SECTOR



CEMENT SECTOR



FOOD AND BEVERAGE SECTOR



COMMERCIAL SECTOR



TELECOMMUNICATIONS SECTOR



OIL AND GAS SECTOR



TRANSPORT SECTOR



RENEWABLE ENERGY SECTOR

HOUSTON  
EE.UU

BARRANQUILLA  
COLOMBIA

LIMA  
PERÚ

EXPERIENCE



**+25**  
YEARS

EXECUTION



**+100**  
PROJECTS

SATISFACTION



**+99**  
CLIENTS

SERVICES

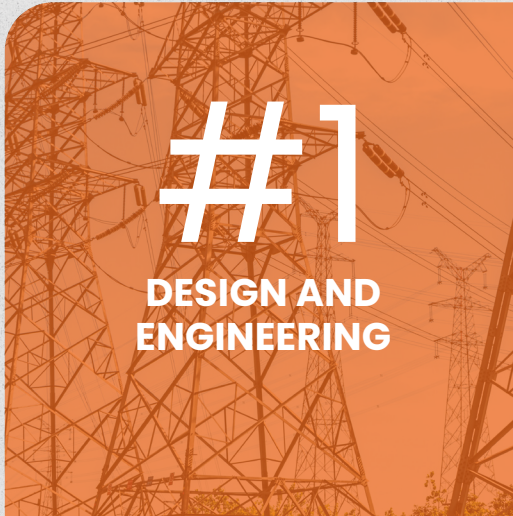


**+27**  
MULTISECTORIAL





## SERVICES LINES



#1

DESIGN AND  
ENGINEERING



#2

ELECTRICAL  
CONSTRUCTION AND  
INSTALLATIONS



#3

DEVELOPMENT AND  
EXECUTION OF GAS  
PROJECTS



#4


DEVELOPMENT AND  
MANAGEMENT OF  
TELECOMMUNICATIONS  
PROJECTS





## DESIGN AND ENGINEERING


- Electric power generation, transmission and distribution.
- Medium and low voltage network design.
- Short Circuit Analysis and Insulation Coordination.
- Load Flow and Protection Coordination.
- S.P.T. y S.I.P.R.A.
- Photovoltaic Power Generation Systems.
- Industrial and Commercial Lighting.
- Classified Area Electrical Systems.
- Design of Unifilar Diagrams in Industrial Plants.
- Residential, commercial and industrial electrical system design.


### APPLICABLE TECHNICAL STANDARDS


 Colombian Technical Standard (NTC-2050)

 National Electrical Code (NEC)

 National Electrical Manufacturers Association (NEMA)

 Technical Regulations for Electrical Installations (RETIE)

 Institute of Electrical and Electronics Engineers (IEEE)

 National Fire Protection Association (NFPA)



## ELECTRICAL CONSTRUCTION AND INSTALLATIONS

---

- Medium Voltage, Low Voltage and Electrical Substations.
- Motor Control Center (MCC).
- Installations of photovoltaic power generation systems.
- Piping for classified and unclassified areas.
- Installation of Industrial Control, Automation, and Instrumentation Systems
- Installations of power and control panels.
- Smart lighting systems.
- Structured cabling networks.
- Security systems.

## MAINTENANCE FRAMEWORK CONTRACT

---

We offer a high-quality comprehensive maintenance service, ensuring timely solutions that optimize performance and the continuity of operations. Through a highly trained team, cutting-edge technology, and a proactive approach, we ensure maximum system availability, minimizing risks and operational costs. Our commitment is to provide a fast and effective service, tailored to the needs of each client, contributing to the achievement of the productive indicators of companies.



## MANUFACTURER CERTIFICATION



- Certified as Low Voltage Switchboard Technicians.



- Systems Integrator for Medium and Low Voltage.
- Certified in the design of Cablofil systems.
- Certified in the design of energy distribution systems with copper and aluminum busbars.
- Certified in the design of automated systems for commercial, residential, and healthcare buildings.



- Certified in the design and implementation of structured cabling systems.



- Certified in the design and implementation of structured cabling systems.



- Certified in the design and implementation of structured cabling systems.
- (CTI-CFC).
- Crestron Lighting Control System Programming.
- D-4K-410-200811-8605.
- Pre-DMC-E (DMC-E -Pre).



- Solution Integrator.





## DEVELOPMENT AND EXECUTION OF GAS PROJECTS

---

- Execution of infrastructure projects for the gas distribution system (Steel gas networks, Polyethylene gas networks, meter installation, and system connections).
- Compression Stations, City Gate, Infrastructure Security.
- Vehicle Service Stations and Mass Transit.



## DEVELOPMENT AND MANAGEMENT OF TELECOMMUNICATIONS PROJECTS

---

- Development of Telecommunications Projects.
- Structured Cabling Network Infrastructure Projects.
- Development of 4G and 5G Infrastructure Projects.
- Antenna Installation Projects, Node Stations, Upgrades of Existing Stations to 4G and 5G Technologies.



OUR  
PROJECTS  
THE BEST SHOWCASE  
OF OUR EXPERIENCE



## AUXILIARY ELECTRICAL SERVICES SYSTEM FOR PROCESSING AND PACKAGING AREAS

Engineering, Supply, and Installation of:

- Electrical Panels.
- Low Voltage Transformers.
- Electrical Conduits.
- Electrical Service Entrances.
- Wiring and Commissioning.



## 3 MVA SUBSTATION AND 13.2KV AND 34.5KV GRID CONNECTION

- Supply, installation, wiring, testing, and commissioning of the substation and medium voltage lines.
- Supply and installation of civil works for pole foundations, panel installation, transformer, and perimeter fencing.
- Supply of poles, service connections, and protection elements for the MV grid.
- Support in coordinating with the grid operator for connection to the local electrical system and commissioning.



## 4000A, 2000A, AND 1200A BUSBARS (FLOUR MILL)

- Design, installation, and wiring of 4000A, 2000A, and 1000A busbars.
- Design and installation of supports for the different processes of the mill.
- Wiring of the supply to Rockwell CCMs from the 2MVA substation of the Wheat Mill.
- Testing, wiring, and commissioning of the system.





# ELECTRICAL SYSTEM AND AUTOMATION (COAL DOCK)

Engineering, Supply, and Installation of:

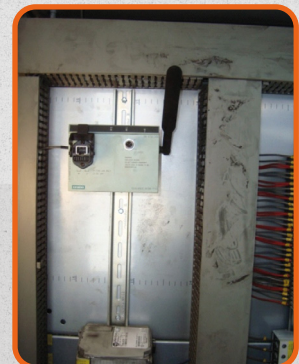
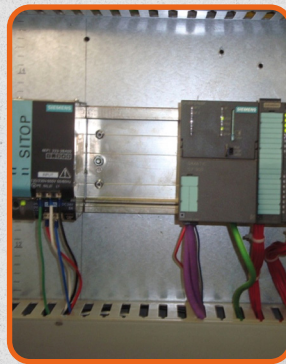
- Electrical Panels.
- Medium and Low Voltage Transformers.
- Electrical Conduits.
- Electrical Service Entrances.
- Wiring and Commissioning.



## ELECTRICAL SYSTEM AND AUTOMATION FOR THE COAL LOADING AND UNLOADING SYSTEM BY TRAIN - EL HATILLO MINE

Engineering, Supply, and Installation of:

- Electrical Panels.
- Medium and Low Voltage Transformers.
- Electrical Conduits.
- Electrical Service Entrances.
- Wiring and Commissioning.



## GASO-CENTERS FOR CNG IN LIMA (North and South)

### Mechanical Works:

- Design, supply, and installation of the natural gas system for the station.
- Design, supply, and installation of Canopies.
- Construction of regulation and measurement stations.
- Construction of a natural gas storage battery in tanks, cisterns, dispatch islands, and liquid fuel tanks, CNG.

### Civil Works:

- Earthworks, construction of buildings for yard areas, offices, substations, and bunkers.

### Electrical Works:

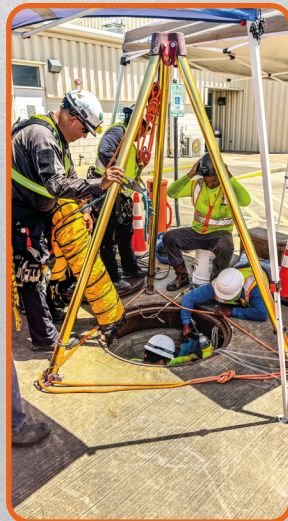
- Diseño y construcción sistema eléctrico de fuerza y control.





## UNDERGROUND MEDIUM VOLTAGE CABLE LAYING PROJECT

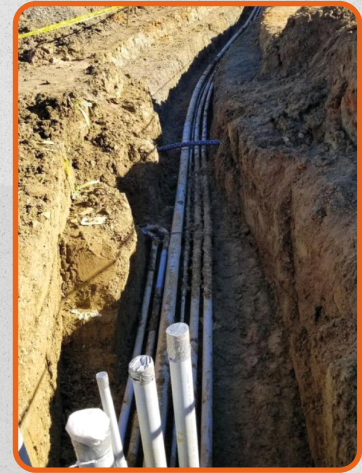
- Laying of electrical cables between designated points at the Port of Houston.
- Preparation of cable paths with minimal disruption to existing infrastructure.
- Use of cable guides to efficiently navigate cables toward the manholes.
- Management of water accumulation within the manholes, requiring daily monitoring and drainage.
- Conducting post-installation tests to verify continuity and connections to each transformer.
- Coordination of operations with the port's electrical maintenance team to avoid disruptions to ongoing port activities.



## INSTALLATION OF THE ELECTRICAL SYSTEM FOR THE CONTROL OF CITY DRAINAGE CHANNELS

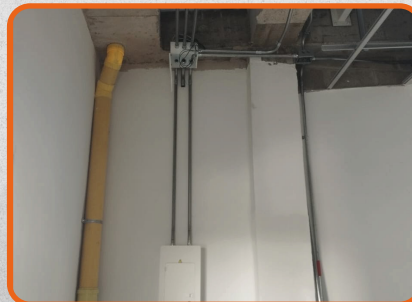
Supply and installation of:

- Electrical panels, lighting systems, and service outlets.
- Medium and low voltage transformers.
- Underground conduits.
- Electrical service connections.
- Support and coordination with the grid operators.



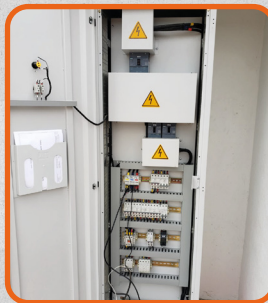
## MEDIUM AND LOW VOLTAGE ELECTRICAL SYSTEM FOR (GRINDING, GRAIN RECEIVING, PACKAGING, STORAGE, EXTERIOR LIGHTING, AND PERIMETER SECURITY)

- Engineering required for the design of the MV and LV electrical system, including project management with the grid operator.
- Engineering, supply, and installation of MV substations and electrical distribution panels for the system.
- Engineering, supply, and installation of electrical conduits and service connections for process and service equipment.
- Engineering, supply, and installation of exterior and interior lighting for the complex, along with perimeter security and camera systems.
- Wiring and commissioning of each system and process.



## FRAMEWORK AGREEMENT FOR ELECTRICAL WORKS AND STRUCTURED CABLING

- Execution of electrical service orders for various users within the mining complex.
- Permanent assignment of operational, engineering, and managerial personnel for projects within the complex.
- Provision of necessary equipment and tools in accordance with company standards.
- Compliance with high-quality standards, safety regulations, and operational integrity throughout the execution of work orders.





ZONA FRANCA PALERMO



PALERMO-MAGDALENA

CONSTRUCTION AND INSTALLATIONS

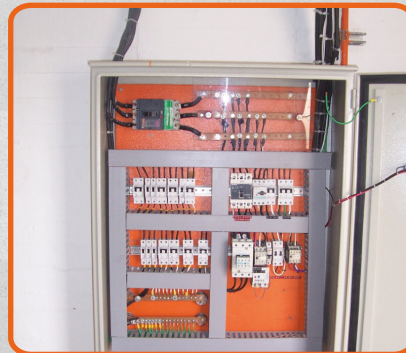
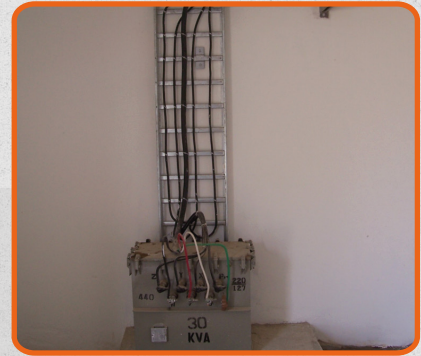
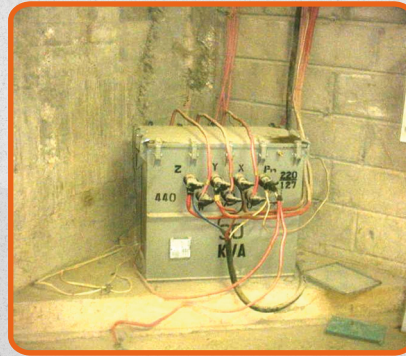
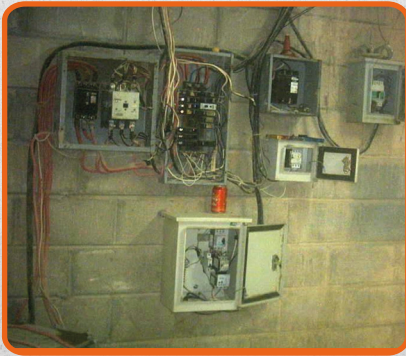
## ELECTRICAL SYSTEM AND CONTROL FOR THE INDUSTRIAL COMPLEX AND PURO POLLO PLANT

- Supply, installation, wiring, testing, and commissioning of electrical panels.
- Supply, installation, and wiring of the automation system.
- Supply and installation of conduit systems and electrical service connections.
- Commissioning of the system.



## ELECTRICAL SYSTEM AND LIGHTING (LARON CRUSHER)

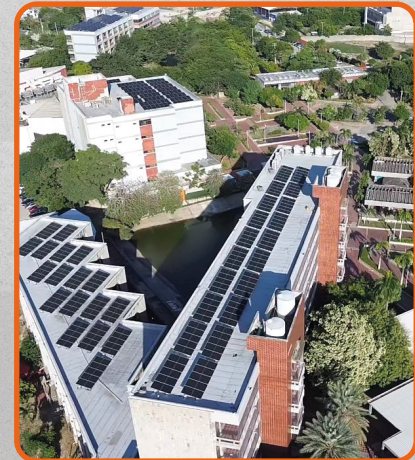
- Supply, installation, wiring, testing, and commissioning of electrical panels.
- Supply, installation, and wiring of the automation system.
- Supply and installation of conduit systems and electrical service connections.
- Commissioning of the system





## PHOTOVOLTAIC SYSTEM 990 kWp, 1752 PANELS 565W

- Design, supply, and installation of a 990 kWp photovoltaic system with 1,752 565W panels.
- Design, supply, and installation of a CCTV system for security.
- Design, supply, and installation of a remote monitoring and control system.
- Design, supply, and installation of SPT and SIPRA systems.





## CONSTRUCTION OF ATHENA COMMERCIAL FACILITY

- Demolition of the existing warehouse.
- Supply, installation, wiring, testing, and commissioning of electrical panels.
- Supply, installation, wiring, testing, and commissioning of the lighting system and service outlets.
- Supply and installation of conduit systems for service connections.
- Commissioning of the system.





## CONSTRUCTION OF OLD NAVY COMMERCIAL FACILITY

- Demolition of the existing warehouse.
- Supply, installation, wiring, testing, and commissioning of electrical panels.
- Supply, installation, wiring, testing, and commissioning of the lighting system and service outlets.
- Supply and installation of conduit systems for service connections.
- Commissioning of the system.



## CIVIL REPAIRS OF HOUSTON METRO MAIN STATION

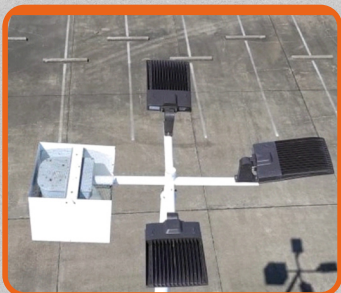
- Demolition of existing station slabs.
- Ground preparation for the installation of steel grills.
- Concrete pouring for metro transit areas.
- Slab strength testing.
- Coordination of operations with the metro maintenance team to avoid disruptions to ongoing activities.





## REPLACEMENT OF LIGHTING FIXTURE AT METRO STATIONS

- Dismantling of existing lighting fixtures.
- Supply, installation, wiring, testing, and commissioning of electrical service connections to lighting fixtures.
- Supply and installation of conduit systems for service connections.
- Supply, installation, wiring, testing, and commissioning of the lighting system and service outlets.





## GAS AND LIQUID FUEL SERVICE STATIONS FOR VEHICLES

Engineering, supply, and installation of:

- Electrical panels.
- MV and LV transformers.
- Electrical conduits.
- Electrical service connections.
- Support and coordination with grid operators.



## DESIGN, CONSTRUCTION, AND COMMISSIONING OF GAS PIPELINES

### Commercial Scope:

- Community engagement to inform about the benefits and implications of the service.

### Civil and Mechanical Works on Roads:

- Municipal procedures for road interventions.
- Excavation of roads for the installation of steel and polyethylene pipelines, where applicable.
- Installation of steel and polyethylene gas pipelines.

### Internal Works in Homes:

- Interventions within homes for the installation of residential gas supply systems.



# INSTALLATION OF COMMUNICATION TOWER

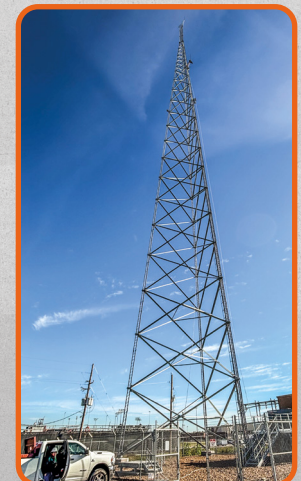
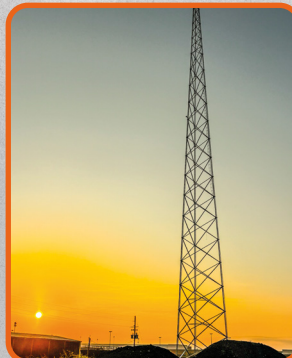
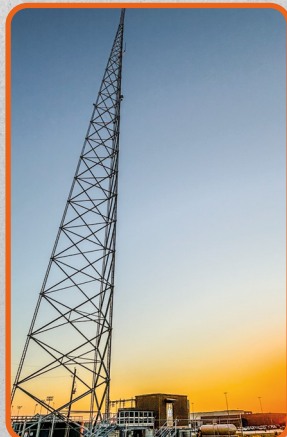
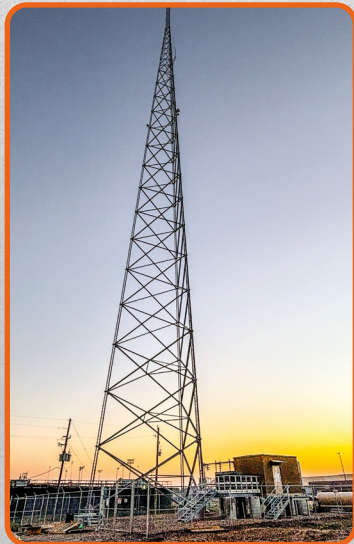
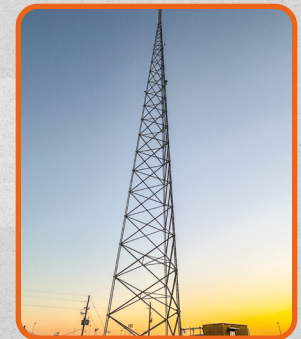
- Dismantling of the existing tower.
- Civil works for foundation, perimeter fencing, and tower access.
- Installation of electrical system, SPT, SIPRA in the station and shelter.
- Installation of radio service connections to the tower and shelter.





# INSTALLATION OF 440' TOWER AND RF INSTALLATION

- Mobilization and logistics of tower sections to the installation site.
- Mechanical assembly of the 440 ft communication tower.
- Installation of RF service connections for radios at the tower and shelter.
- Commissioning and support during the startup phase.





NIT:900.786.513-4

# CONTACT US

- **GENERAL MANAGEMENT** 🇨🇴  
 EDUARDO ISAZA  
 Phone: +57 320 549 5534  
 Email: eisaza@i2s.com.co

- **GENERAL MANAGEMENT** 🇨🇴  
 LUIS SUAREZ  
 Phone: +57 313 502 3833  
 Email: lsuarez@i2s.com.co

- **WEBSITE**  
<https://www.i2s.com.co/>

## CERTIFICATIONS

### COLOMBIA



### PERÚ



### USA

